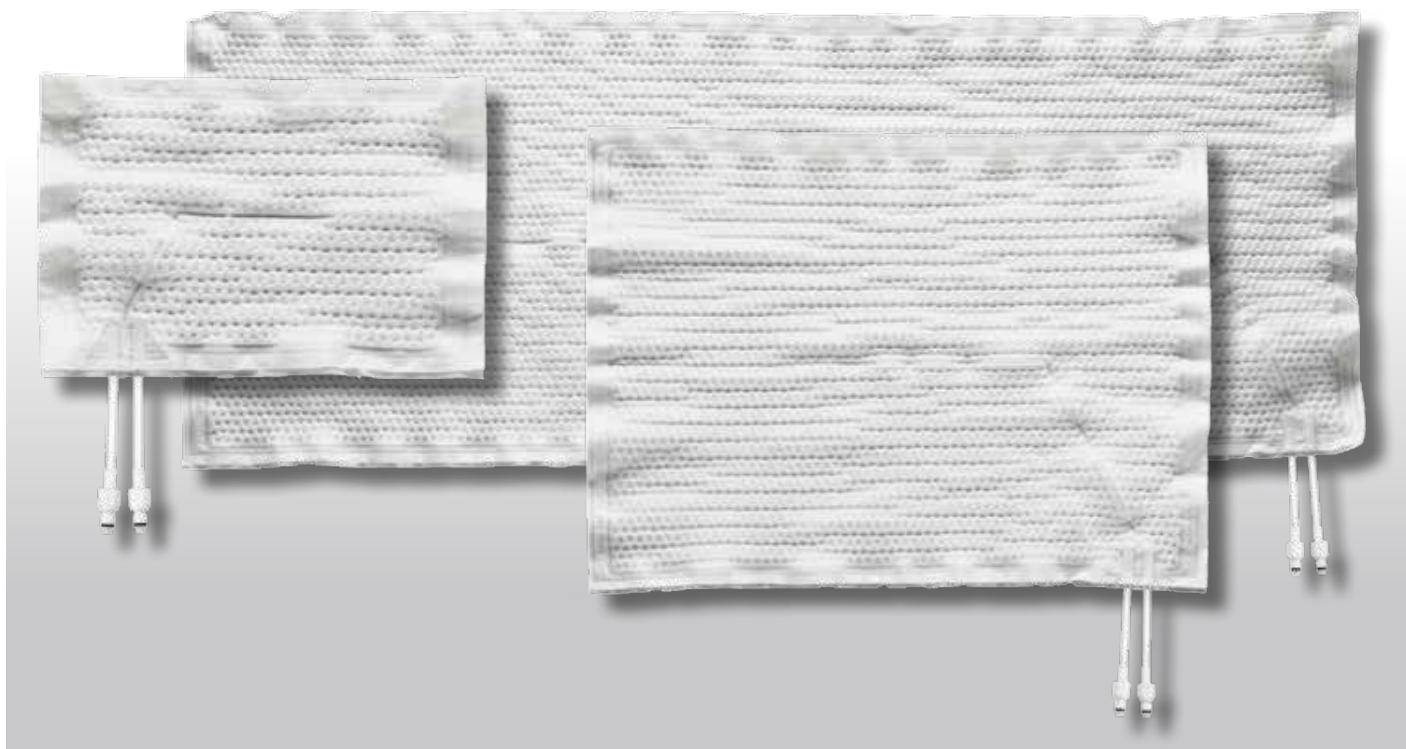
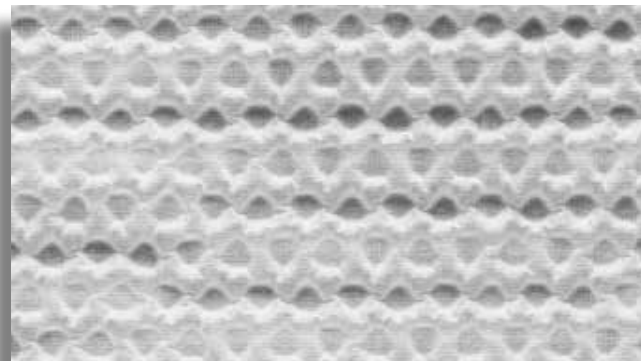


MAXI-THERM® LITE

SINGLE-USE HYPER-HYPOTHEMIA BLANKETS

CSZ's Maxi-Therm® Lite hyper-hypothermia blankets are designed with a soft, comfortable material that covers both sides of the blankets. The random flow pattern in each blanket allows for even temperature to be distributed to the patient whether it be warm or cold water. The Maxi-Therm® Lite blankets also have a strong bonded pattern in the blanket resulting in a long lasting seal during usage over or under the patient.



The white material provides a clean feel, and in today's hospitals where Hospital Acquired Infections are an important issue, having a white blanket helps notify the caregiver when the blanket is soiled and needs to be changed.

Maxi-Therm® Lite Product Description

Model 876	Adult - 25" x 64" (63.5cm x 162.cm)
Model 874	Pediatric - 25" x 33" (63.5cm x 83.8cm)
Model 873	Infant - 12.5" x 18" (31.8cm x 45.7cm)

**must purchase 286 Hose separately to use with equipment